

4

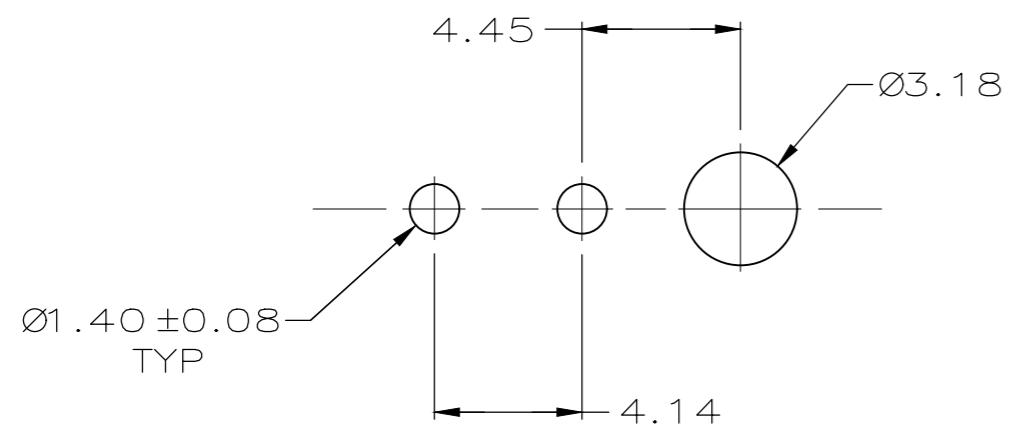
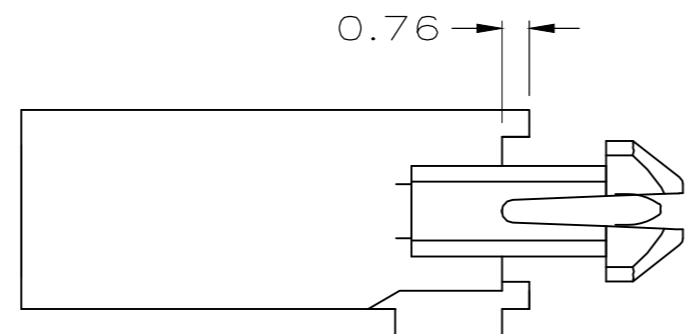
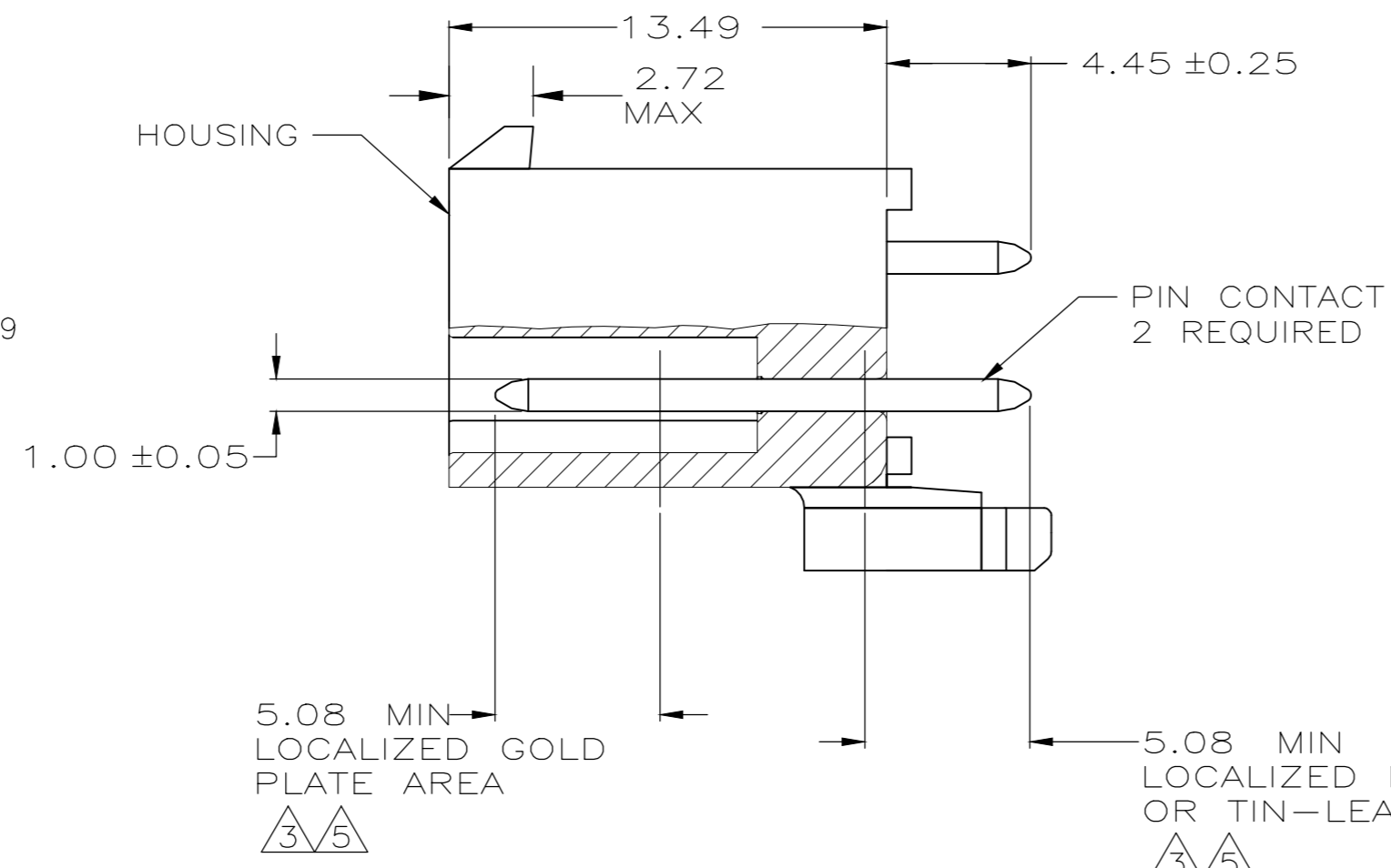
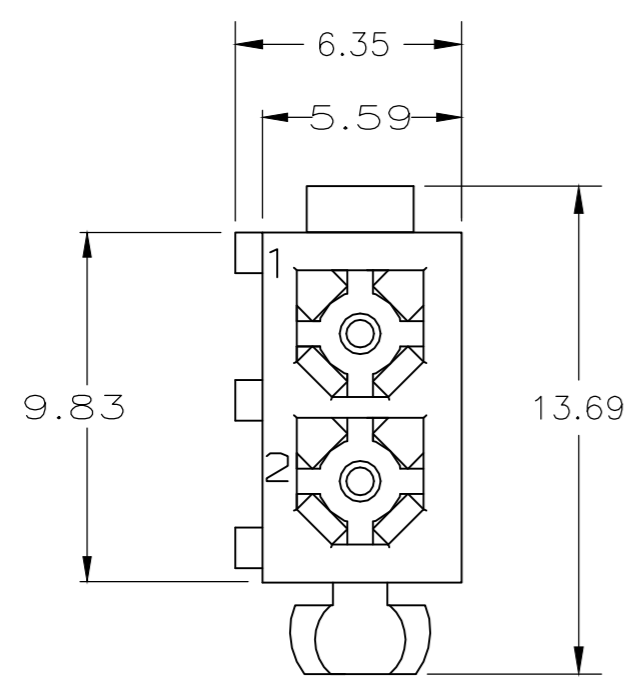
3

2

1

THIS DRAWING IS UNPUBLISHED. RELEASED FOR PUBLICATION. ALL RIGHTS RESERVED.

LOC		DIST		REVISIONS					
CM		0		P	LTR	DESCRIPTION	DATE	DWN	APVD
				M2		REVISED PER ECR-20-100462	21SEP2020	BDA	SW



RECOMMENDED LAYOUT FOR 1.57 THICK BOARD TOLERANCES NON-ACCUMULATIVE

- PINS TO COMPLY WITH AMP SOLDERABILITY SPEC. 109-11-3.
- 0.00381 MIN MATTE TIN LEAD PLATE OVER 0.00127 MIN NICKEL.
- 0.00076 MIN GOLD PLATE IN THE LOCALIZED PLATE AREA, 0.00381 MATTE TIN LEAD IN THE LOCALIZED PLATE AREA, BOTH OVER 0.00127 MIN NICKEL.
- 0.00381 MIN MATTE TIN PLATE OVER 0.00127 MIN NICKEL.
- 0.00076 MIN GOLD PLATE IN THE LOCALIZED PLATE AREA, 0.00381 MATTE TIN IN THE LOCALIZED PLATE AREA, BOTH OVER 0.00127 MIN NICKEL.

BRASS, GOLD	5	NYLON, UL94V-0	WHITE	1-770166-1
BRASS, TIN	4	NYLON, UL94V-0	WHITE	1-770166-0
BRASS, GOLD	3	NYLON, UL94V-0	WHITE	770166-2
BRASS, TIN-LEAD	2	NYLON, UL94V-0	WHITE	770166-1
MATERIAL	FINISH	MATERIAL	COLOR	PART NO.
PIN		HOUSING		

THIS DRAWING IS A CONTROLLED DOCUMENT.		DWN S CARPENTER	08JUN05	STE TE Connectivity	
DIMENSIONS: mm		CHK R JONES	28JUL2003		
TOLERANCES UNLESS OTHERWISE SPECIFIED:		APVD R JONES	28JUL2003	NAME	
0 PLC ± -		PRODUCT SPEC		HEADER ASSEMBLY, 2 CKT, MINI UNIVERSAL MATE-N-LOK	
1 PLC ± -		APPLICATION SPEC		SIZE	
2 PLC ± 0.13		WEIGHT		CAGE CODE	
3 PLC ± -		A2		00779	
4 PLC ± -		CUSTOMER DRAWING		DRAWING NO	
ANGLES ± -		SCALE 5:1		SHEET 1 of 1	
FINISH		REV M2		RESTRICTED TO	