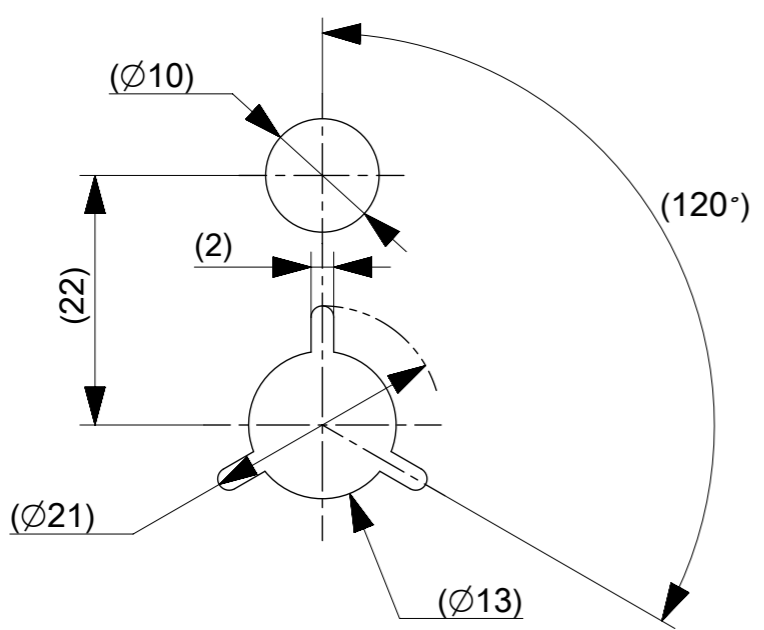


NOTES

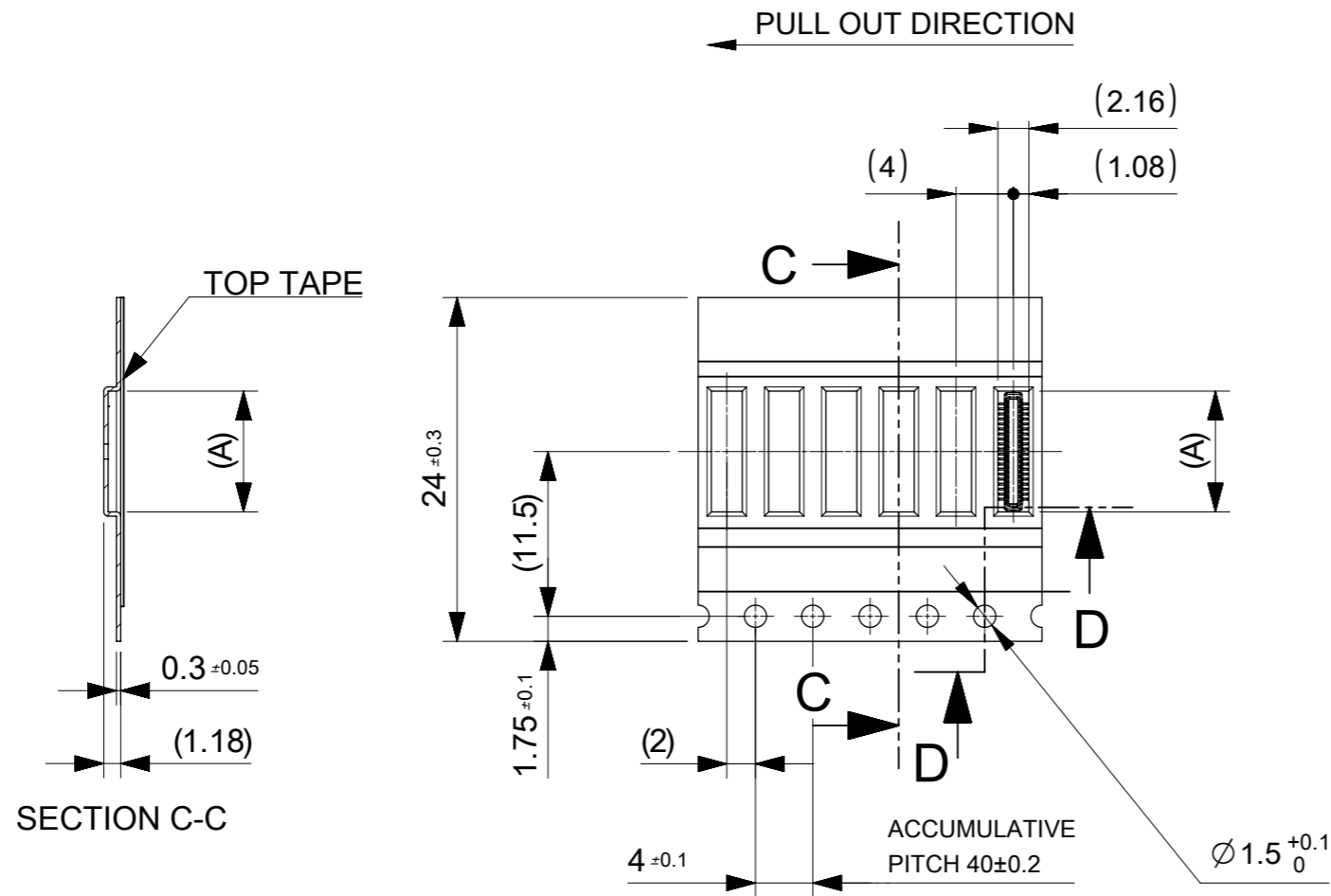
1. RE DETAILED DIMENSION, SEE PRODUCT DRAWING.
2. NUMBER OF CONNECTORS : 15000PCS/REEL
3. LEAD TAPE LENGTH
4. TOP TAPE PEEL FORCE IS DEFINED BY IEC60286-3.
5. MATERIAL
 CARRIER TAPE : POLYSTYRENE
 TOP TAPE : PET , OTHER
 REEL : POLYSTYRENE (PS) < RECYCLE MATERIAL CONTAINED >
6. ELV AND RoHS COMPLIANT



DETAIL "D"

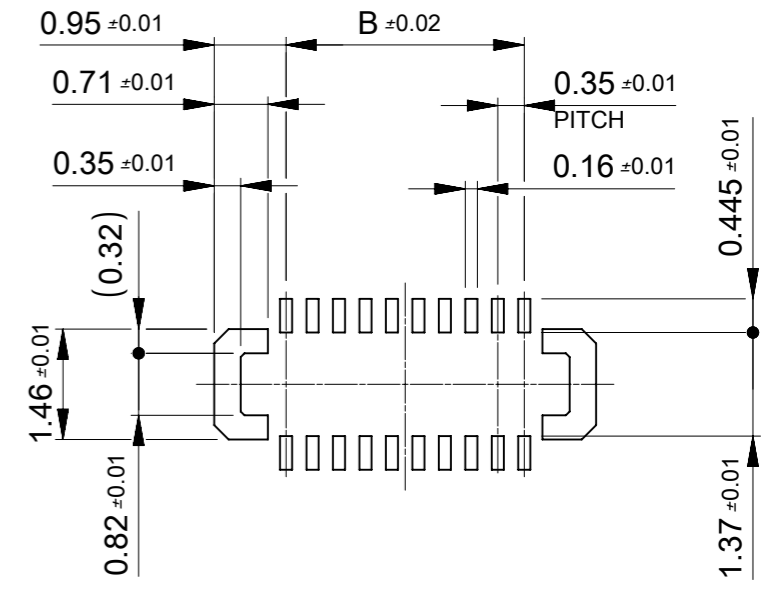
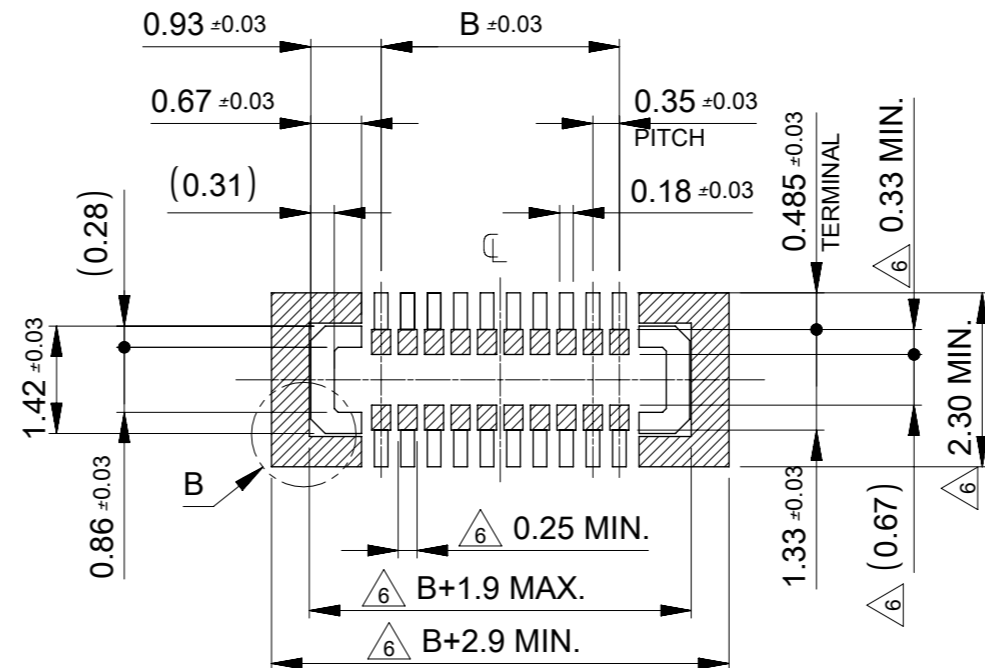
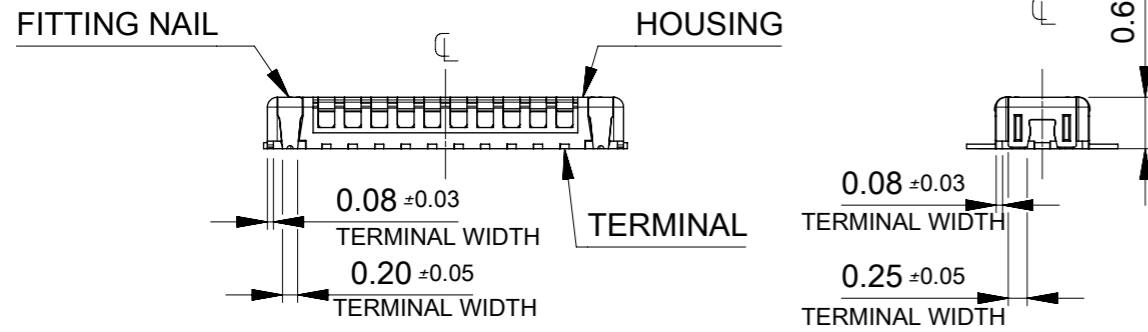
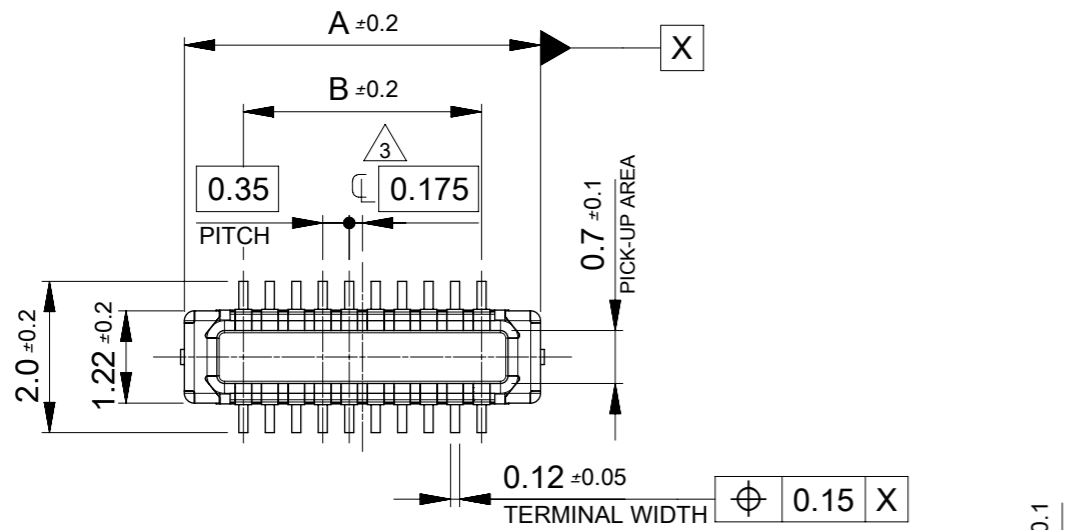
MODEL NO. 2024370**3

SYMBOLS		THIS DRAWING CONTAINS INFORMATION THAT IS PROPRIETARY TO MOLEX ELECTRONIC TECHNOLOGIES, LLC AND SHOULD NOT BE USED WITHOUT WRITTEN PERMISSION		CURRENT REV DESC:			molex		
$\nabla = 0$	mm	SCALE	1:1	EC NO: 609517					
$\nabla = 0$	GENERAL TOLERANCES (UNLESS SPECIFIED)			DRWN: NOKIMOTO 2018/12/21			PRODUCT CUSTOMER DRAWING		
$\nabla = 0$	ANGULAR TOL $\pm 3.0^\circ$			CHK'D: KTANAKA03 2019/01/09			DOCUMENT NUMBER		
$\nabla = 0$	4 PLACES ± 0.03			APPR: TKUSUHARA01 2019/01/09			2024370000		
$\nabla = 0$	3 PLACES ± 0.03			INITIAL REVISION:			DOC TYPE DOC PART REVISION		
$\nabla = 0$	2 PLACES ± 0.05			DRWN: NOKIMOTO 2018/06/08			PSD 002 B		
$\nabla = 0$	1 PLACE ± 0.1			APPR: TKUSUHARA01 2018/11/30			MATERIAL NUMBER		
$\nabla = 0$	0 PLACES ± 0.2			DRAFT WHERE APPLICABLE MUST REMAIN WITHIN DIMENSIONS			CUSTOMER		
$\square = 0$	THIRD ANGLE PROJECTION			DRAWING			SHEET NUMBER		
$\nabla = 0$	A3-SIZE			SERIES			GENERAL		
	202437			GENERAL			1 OF 2		



24	29.4	25.4	11.93	2024370603	○	---	60
			10.18	2024370503	○	---	50
			8.43	2024370403	○	---	40
キャリアテープ幅 CARRIER TAPE WIDTH	C	B	(A)	EMBOSSED TAPE PACKAGE	HIGH VOL. TOOL	LOW VOL. TOOL	CIRCUIT
				ORDER NO.	SAMPLE PREPARATION ○:TOOLED △:WOOK IN PROCESS ---:TOOLING TO BE CONFIRMED		

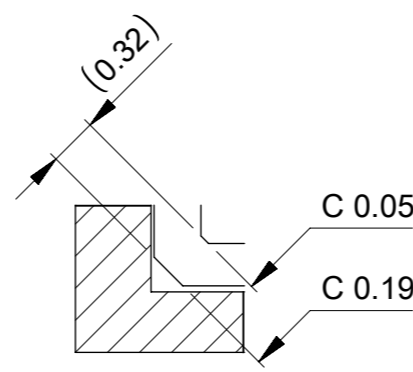
SYMBOLS ▽ = 0 ▽ = 0 ▽ = 0 ▽ = 0 ▽ = 0 ▽ = 0 ▽ = 0 ▽ = 0	THIS DRAWING CONTAINS INFORMATION THAT IS PROPRIETARY TO MOLEX ELECTRONIC TECHNOLOGIES, LLC AND SHOULD NOT BE USED WITHOUT WRITTEN PERMISSION DIMENSION UNITS: mm SCALE: 2:1 GENERAL TOLERANCES (UNLESS SPECIFIED) ANGULAR TOL ± 3.0° 4 PLACES ± 0.03 3 PLACES ± 0.03 2 PLACES ± 0.05 1 PLACE ± 0.1 0 PLACES ± 0.2 DRAFT WHERE APPLICABLE MUST REMAIN WITHIN DIMENSIONS	CURRENT REV DESC: EC NO: 609517 DRWN: NOKIMOTO 2018/12/21 CHK'D: KTANAKA03 2019/01/09 APPR: TKUSUHARA01 2019/01/09 INITIAL REVISION: DRWN: NOKIMOTO 2018/06/08 APPR: TKUSUHARA01 2018/11/30	<table border="1"> <tr><td colspan="3" style="text-align: center;">molex</td></tr> <tr><td colspan="3" style="text-align: center;">0.35 BB HB8 PLUG EMBSTP PKG</td></tr> <tr><td colspan="3" style="text-align: center;">PRODUCT CUSTOMER DRAWING</td></tr> <tr> <td>DOCUMENT NUMBER</td> <td>DOC TYPE</td> <td>DOC PART</td> </tr> <tr> <td>2024370000</td> <td>PSD</td> <td>002</td> </tr> <tr> <td></td> <td></td> <td>REVISION</td> </tr> <tr> <td></td> <td></td> <td>B</td> </tr> </table>	molex			0.35 BB HB8 PLUG EMBSTP PKG			PRODUCT CUSTOMER DRAWING			DOCUMENT NUMBER	DOC TYPE	DOC PART	2024370000	PSD	002			REVISION			B
	molex																							
0.35 BB HB8 PLUG EMBSTP PKG																								
PRODUCT CUSTOMER DRAWING																								
DOCUMENT NUMBER	DOC TYPE	DOC PART																						
2024370000	PSD	002																						
		REVISION																						
		B																						
THIRD ANGLE PROJECTION DRAFTING SYMBOL:	DRAWING: A3-SIZE SERIES: 202437 MATERIAL NUMBER: GENERAL CUSTOMER: GENERAL SHEET NUMBER: 2 OF 2																							



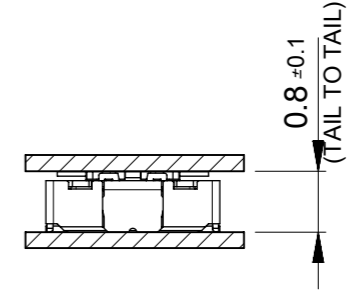
P.W. BOARD PATTERN LAYOUT (REFERENCE)

RECOMMENDED METAL MASK LAYOUT (REFERENCE)

RECOMMENDED THICKNESS OF METAL MASK : t=0.08mm
 OPEN APERTURE OF METAL MASK APPROX. 80% For TERMINAL
 APPROX. 120% For FITING NAIL



DETAIL B SCALE 20:1



MATED CONDITION

- NOTES**
- MATERIAL**
 HOUSING : LIQUID CRYSTAL POLYMER UL94V-0(COLOR : BLACK)
 TERMINAL : COPPER ALLOY
 FITTING NAIL : COPPER ALLOY
 - PLATING**
TERMINAL :
 CONTACT AREA: SEPARAED GOLD PLATING (0.1 MICROMETER MINIMUM).
 SOLDER TAIL AREA: SEPARATED GOLD PLATING
 UNDER PLATING : NICKEL OVERALL
 *DIVIDE INTO PARTS THE GOLD PLATING OF THE CONTACT AND THE TAIL PART BY THE NICKEL PLATING.
FITTING NAIL :
 CONTACT AREA: SEPARAED GOLD PLATING (0.1 MICROMETER MINIMUM).
 SOLDER TAIL AREA: SEPARATED GOLD PLATING
 UNDER PLATING : NICKEL OVERALL
 *DIVIDE INTO PARTS THE GOLD PLATING OF THE CONTACT AND THE TAIL PART BY THE NICKEL PLATING.
 *EVEN THOUGH GOLD PLATING ON THE TOP SURFACE OF NAIL MIGHT BE THIN, NO FUNCTIONAL PROBLEM.
- ③ APPLY FOR (CIRCUIT/2)=EVEN
 4. MATE WITH : 2024360**3
 5. TAIL AND FITTING NAIL COPLANARITY TO BE 0.08MAXIMUM.
 ⑥ PROHIBITED AREA OF PATTERN WIRING AND SOLDER.
 (FOR EACH AREA, THE WIRING THAT TOUCHES ON THE SOLDER CAN BE ATTACHED, THEN COVERED WITH A FILM TO KEEP SOLDER OUT.)

10.15	11.71	2024370603	○	---	2	60
8.40	9.96	2024370503	○	---	2	50
6.65	8.21	2024370403	○	---	2	40
B	A	EMBOSSED TAPE PACKAGE	MASS PRODUCTION	LOW VOL. TOOL	POWER (FITTING NAIL)	SIGNAL
		ORDER No.	SAMPLE PREPARATION ○: TOOLED △: WORK IN PROCESS ---: TOOLING TO BE CONFIRMED			CIRCUIT
CONNECTOR SERIES No. : 202437						

THIS DRAWING CONTAINS INFORMATION THAT IS PROPRIETARY TO MOLEX ELECTRONIC TECHNOLOGIES, LLC AND SHOULD NOT BE USED WITHOUT WRITTEN PERMISSION

DIMENSION UNITS	SCALE	CURRENT REV DESC:		molex		
mm	10:1					
GENERAL TOLERANCES (UNLESS SPECIFIED)				0.35 BB H=0.8 W2.3 HB8 PLUG ASSY		
ANGULAR TOL ± 3.0 °				PRODUCT CUSTOMER DRAWING		
4 PLACES	± 0.03	EC NO: 640065	2020/06/19	DOCUMENT NUMBER		
3 PLACES	± 0.03	DRWN: DGONDO	2020/06/23	DOC TYPE DOC PART REVISION		
2 PLACES	± 0.05	CHK'D: MSASAO	2020/06/23	2024371000 PSD 002 C		
1 PLACE	± 0.1	APPR: YNAITO				
0 PLACES	± 0.2	INITIAL REVISION:				
DRAFT WHERE APPLICABLE MUST REMAIN WITHIN DIMENSIONS		DRWN: NOKIMOTO	2018/02/27			
THIRD ANGLE PROJECTION		APPR: TKUSUHARA01	2018/11/30			
DRAWING		SERIES	MATERIAL NUMBER	CUSTOMER		SHEET NUMBER
A3-SIZE		202437		GENERAL		1 OF 1