



ULTRA-SMALL CERAMIC

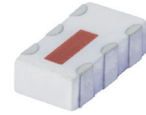
Power Splitter/Combiner

QCN-3+

2 Way-90° 50Ω 220 to 470 MHz

FEATURES

- Low insertion loss, 0.4 dB typ.
- High isolation, 25 dB typ.
- Wrap-around terminal for excellent solderability
- Ultra small, 0.12"X0.06"X0.035"



Generic photo used for illustration purposes only

CASE STYLE: FV1206-1

+RoHS Compliant

The +Suffix identifies RoHS Compliance.
See our website for methodologies and qualifications

APPLICATIONS

- Balanced amplifiers
- Modulators
- VHF
- Defense communication

ELECTRICAL SPECIFICATIONS AT 25°C

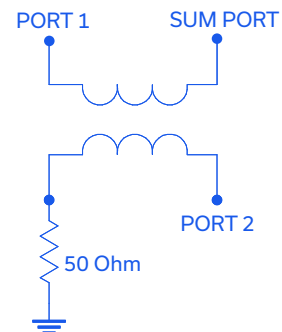
| Parameter | Frequency (MHz) | Min. | Typ. | Max. | Unit |
|------------------------------|-----------------|------|------|------|--------|
| Frequency Range | | 220 | | 470 | MHz |
| Insertion Loss, above 3.0 dB | 220-470 | | 0.6 | 0.8 | dB |
| | 270-350 | | 0.4 | 0.7 | |
| | 350-450 | | 0.6 | 0.8 | |
| Isolation | 220-470 | 18 | 24 | | dB |
| | 270-350 | 18 | 25 | | |
| | 350-450 | 20 | 30 | | |
| Phase Unbalance | 220-470 | | 1 | 8 | Degree |
| | 270-350 | | 3 | 5 | |
| | 350-450 | | 5 | 8 | |
| Amplitude Unbalance | 220-470 | | 0.5 | 1.7 | dB |
| | 270-350 | | 0.7 | 1.0 | |
| | 350-450 | | 0.5 | 1.0 | |
| VSWR | 220-470 | | 1.2 | | (:1) |
| | 270-350 | | 1.2 | | |
| | 350-450 | | 1.2 | | |

MAXIMUM RATINGS

| Parameter | Ratings |
|-----------------------------|----------------|
| Operating Temperature | -55°C to 100°C |
| Storage Temperature | -55°C to 100°C |
| Power Input (as a splitter) | 15W* max. |

* Derate linearly to 7W at 100°C ambient.
Permanent damage may occur if any of these limits are exceeded.

ELECTRICAL SCHEMATIC





ULTRA-SMALL CERAMIC

Power Splitter/Combiner

QCN-3+

Mini-Circuits

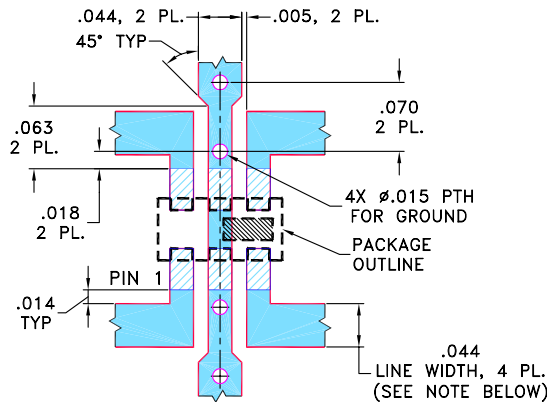
2 Way-90° 50Ω 220 to 470 MHz

PIN CONNECTIONS

| | |
|----------------------|-----|
| SUM PORT | 1 |
| PORT 1 (0°) | 4 |
| PORT 2 (+90°) | 6 |
| GROUND | 2,5 |
| 50 OHM TERM EXTERNAL | 3 |

PRODUCT MARKING: SB

DEMO BOARD MCL P/N: TB-255
SUGGESTED PCB LAYOUT (PL-131)

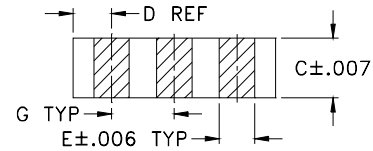
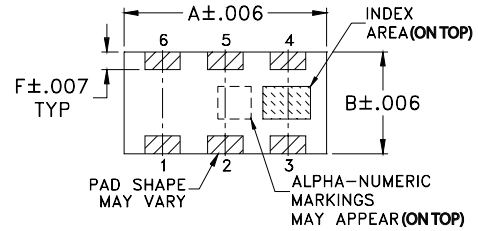


NOTES: 1. TRACE WIDTH IS SHOWN FOR ROGERS RO4350B WITH DIELECTRIC THICKNESS $0.020" \pm 0.0015"$; COPPER: 1/2 OZ. EACH SIDE. FOR OTHER MATERIALS TRACE WIDTH MAY NEED TO BE MODIFIED.

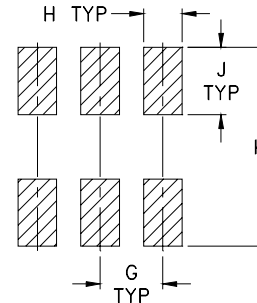
2. BOTTOM SIDE OF THE PCB IS CONTINUOUS GROUND PLANE.

- DENOTES PCB COPPER LAYOUT WITH SMOBC (SOLDER MASK OVER BARE COPPER)
- DENOTES COPPER LAND PATTERN FREE OF SOLDER MASK

OUTLINE DRAWING



PCB Land Pattern



Suggested Layout,
Tolerance to be within ± 0.002

OUTLINE DIMENSIONS (Inches/mm)

| A | B | C | D | E | F |
|------|------|------|------|-------|------|
| .126 | .063 | .035 | .024 | .022 | .011 |
| 3.20 | 1.60 | 0.89 | 0.61 | 0.56 | 0.28 |
| G | H | J | K | wt | |
| .039 | .024 | .042 | .123 | grams | |
| 0.99 | 0.61 | 1.07 | 3.12 | .020 | |

TAPE & REEL INFORMATION: F75





ULTRA-SMALL CERAMIC

Power Splitter/Combiner

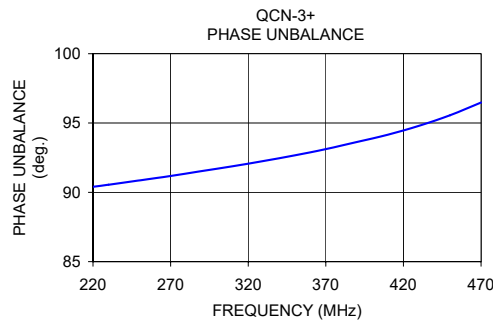
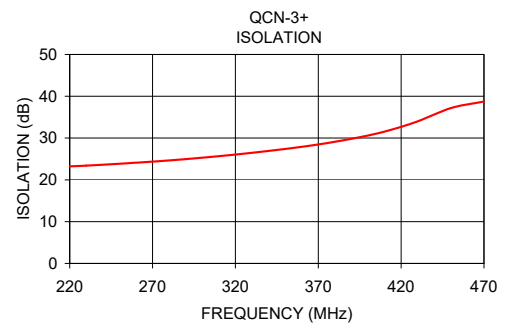
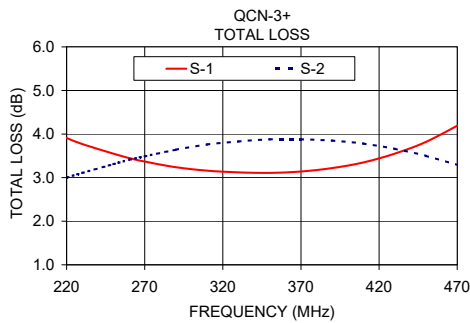
QCN-3+

2 Way-90° 50Ω 220 to 470 MHz

TYPICAL PERFORMANCE DATA

| Frequency (MHz) | Total Loss ¹ (dB) | | Amplitude Unbalance (dB) | Isolation (dB) | Phase Unbalance (deg.) | VSWR (:1) | | |
|-----------------|------------------------------|------|--------------------------|----------------|------------------------|-----------|------|------|
| | S-1 | S-2 | | | | S | 1 | 2 |
| 220.00 | 3.91 | 3.00 | 0.91 | 23.23 | 90.40 | 1.07 | 1.12 | 1.07 |
| 230.00 | 3.77 | 3.11 | 0.67 | 23.41 | 90.55 | 1.06 | 1.12 | 1.06 |
| 250.00 | 3.55 | 3.31 | 0.23 | 23.85 | 90.86 | 1.05 | 1.11 | 1.06 |
| 260.00 | 3.45 | 3.41 | 0.05 | 24.11 | 91.02 | 1.05 | 1.11 | 1.05 |
| 270.00 | 3.37 | 3.49 | 0.12 | 24.37 | 91.18 | 1.04 | 1.10 | 1.05 |
| 290.00 | 3.24 | 3.64 | 0.39 | 24.96 | 91.53 | 1.04 | 1.10 | 1.04 |
| 310.00 | 3.16 | 3.76 | 0.60 | 25.67 | 91.88 | 1.03 | 1.09 | 1.03 |
| 330.00 | 3.12 | 3.83 | 0.72 | 26.46 | 92.26 | 1.03 | 1.08 | 1.03 |
| 350.00 | 3.11 | 3.88 | 0.77 | 27.38 | 92.67 | 1.04 | 1.08 | 1.02 |
| 370.00 | 3.14 | 3.88 | 0.74 | 28.47 | 93.12 | 1.05 | 1.07 | 1.02 |
| 390.00 | 3.22 | 3.85 | 0.63 | 29.82 | 93.63 | 1.07 | 1.07 | 1.02 |
| 410.00 | 3.35 | 3.78 | 0.42 | 31.55 | 94.16 | 1.09 | 1.07 | 1.01 |
| 430.00 | 3.55 | 3.66 | 0.11 | 33.99 | 94.80 | 1.11 | 1.07 | 1.01 |
| 450.00 | 3.82 | 3.50 | 0.32 | 37.16 | 95.56 | 1.14 | 1.07 | 1.02 |
| 470.00 | 4.19 | 3.29 | 0.90 | 38.74 | 96.48 | 1.17 | 1.08 | 1.02 |

1. Total Loss = Insertion Loss + 3 dB splitter loss.



- NOTES**
- A. Performance and quality attributes and conditions not expressly stated in this specification document are intended to be excluded and do not form a part of this specification document.
 - B. Electrical specifications and performance data contained in this specification document are based on Mini-Circuit's applicable established test performance criteria and measurement instructions.
 - C. The parts covered by this specification document are subject to Mini-Circuits standard limited warranty and terms and conditions (collectively, "Standard Terms"); Purchasers of this part are entitled to the rights and benefits contained therein. For a full statement of the standard. Terms and the exclusive rights and remedies thereunder, please visit Mini-Circuits' website at www.minicircuits.com/terms/viewterm.html

