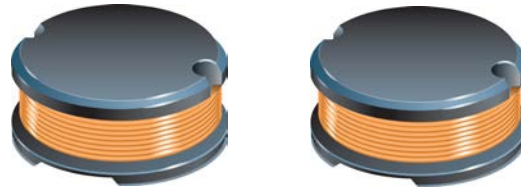




PRODUCT CHANGE NOTIFICATION

MAGNETICS



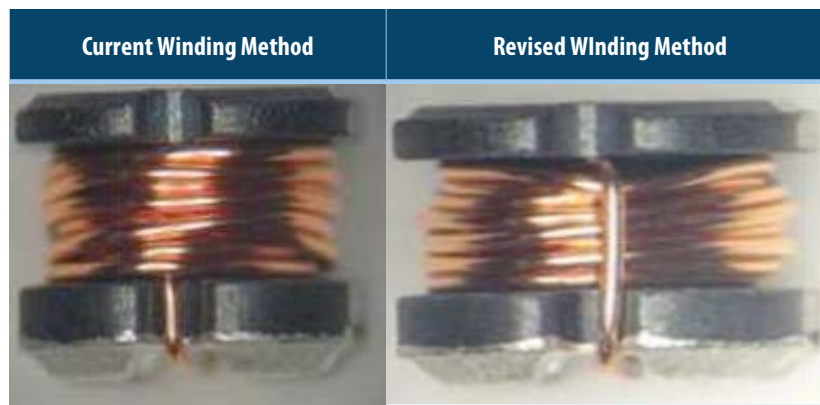
Change to Manufacturing Process Automation and Winding Method

Model SDR1006 and PM105 Series

Riverside, California – August 18, 2020 - **REVISED August 25, 2020** – Effective February 6, 2021, Bourns is changing the winding and soldering process for the Model [SDR1006](#) and [PM105](#) Non-Shielded Power Inductor Series from manual / semi-automated to automated as part of the manufacturing process enhancement.

In addition, the inductor's winding starting turn will begin at the top of inductor core instead of from the bottom. The revised winding method helps ensure that the wire insulation of the start turn will be less impacted by soldering heat from the tinning process.

The form of the products will be changed. The fit and function will remain the same. The quality and reliability of the inductor will be improved. A list of affected part numbers is included on the following page.



Implementation dates are as follows:

Date that manufacturing of existing products will cease: **February 6, 2021**

Date that deliveries of modified products will begin: **February 7, 2021**

First date code using the above changes: **2106**

If you have any questions or need additional information, please feel free to contact [Customer Service/Inside Sales](#).

Users should verify that the described changes will not impact the performance of the product in their specific applications.

IC2076

Affected Part Numbers				
SDR1006				
SDR1006-100KL	SDR1006-151KL	SDR1006-270KL	SDR1006-391KL	SDR1006-5R6ML
SDR1006-100ML	SDR1006-152KL	SDR1006-271KL	SDR1006-392KL	SDR1006-680KL
SDR1006-101KL	SDR1006-180ML	SDR1006-272KL	SDR1006-3R3ML	SDR1006-681KL
SDR1006-102KL	SDR1006-181KL	SDR1006-2R2ML	SDR1006-3R9ML	SDR1006-6R8ML
SDR1006-102V4KL	SDR1006-182KL	SDR1006-2R5ML	SDR1006-470KL	SDR1006-820KL
SDR1006-120ML	SDR1006-1R5ML	SDR1006-330KL	SDR1006-471KL	SDR1006-821KL
SDR1006-121KL	SDR1006-220ML	SDR1006-331KL	SDR1006-472KL	SDR1006-8R2ML
SDR1006-122KL	SDR1006-221KL	SDR1006-332KL	SDR1006-4R7ML	
SDR1006-150ML	SDR1006-222KL	SDR1006-332KLP	SDR1006-560KL	
SDR1006-151KCCL	SDR1006-222V5KL	SDR1006-390KL	SDR1006-561KL	
PM105				
PM105-100M-RC	PM105-180M-RC	PM105-270M-RC	PM105-390M-RC	PM105-561K-RC
PM105-101K-RC	PM105-181K-RC	PM105-271K-RC	PM105-391K-RC	PM105-680K-RC
PM105-120M-RC	PM105-220M-RC	PM105-330K-RC	PM105-470K-RC	PM105-681K-RC
PM105-121K-RC	PM105-221K-RC	PM105-330M-RC	PM105-471K-RC	PM105-820K-RC
PM105-150M-RC	PM105-220M-RC	PM105-331K-RC	PM105-560K-RC	PM105-821K-RC
PM105-151K-RC	PM105-270K-RC	PM105-390K-RC	PM105-471K-RC	PM105-820K-RC