

DO NOT
SCALE FROM
THIS PRINT

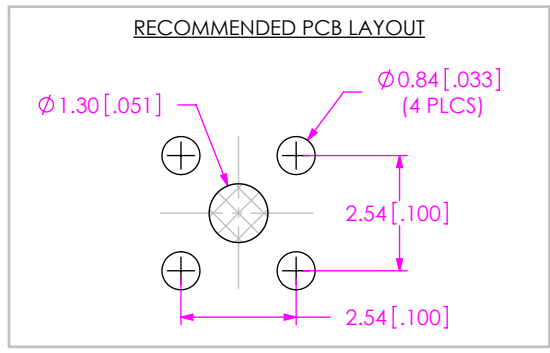
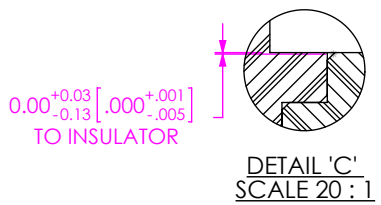
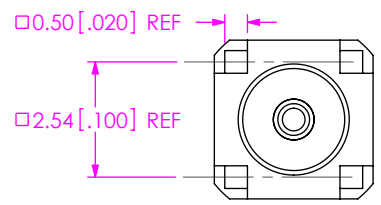
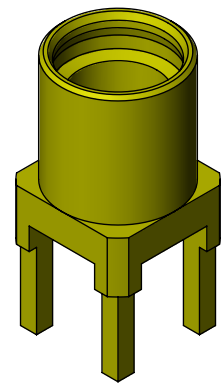
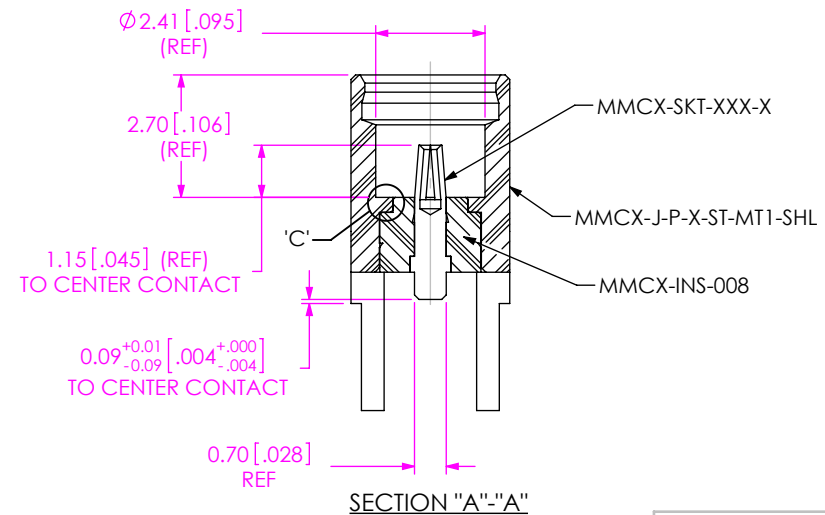
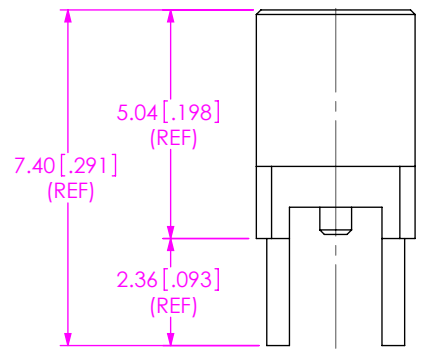
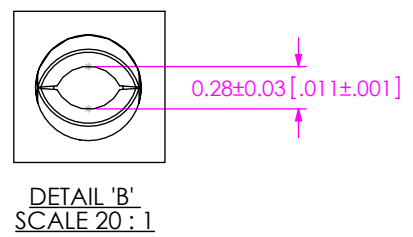
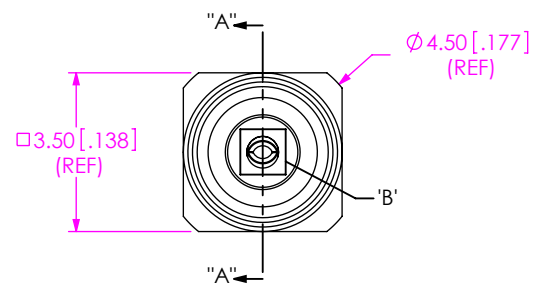
GENDER
-J: JACK

TERMINATION
-MT1: MIXED TECHNOLOGY

TYPE
-P: PCB

ORIENTATION
-ST: STRAIGHT

PLATING SPECIFICATION
-H: HEAVY GOLD
(SEE TABLE 1)



NOTES:

1. \square REPRESENTS A CRITICAL DIMENSION.
2. PUSHOUT FORCE FOR INSULATOR: 22.24 N [5 LB] MIN.
3. PUSHOUT FORCE FOR CENTER CONTACT: 11.12 N [2.5 LB] MIN.
4. PARTS TO BE PACKAGED IN TRAYS; IF QUANTITY IS LESS THAN HALF TRAY, PARTS TO BE PACKAGED IN COHESIVE FOAM.
5. RoHS COMPLIANT.



F:\DWG\MISC\MKTG\MMCX-J-P-X-ST-MT1-MKT.SLDDRW

UNLESS OTHERWISE SPECIFIED, DIMENSIONS ARE IN MILLIMETERS [INCHES]. TOLERANCES ARE:

DECIMALS ANGLES

.X: ±0.3 [0.1] 2°

.XX: ±0.13 [0.05]

.XXX: ±0.051 [0.020]

PROPRIETARY NOTE

THIS DOCUMENT CONTAINS CONFIDENTIAL AND PROPRIETARY INFORMATION AND ALL DESIGN, MANUFACTURING, REPRODUCTION, USE, PATENT RIGHTS AND SALES RIGHTS ARE EXPRESSLY RESERVED BY SAMTEC, INC. THIS DOCUMENT SHALL NOT BE DISCLOSED, IN WHOLE OR PART, TO ANY UNAUTHORIZED PERSON OR ENTITY NOR REPRODUCED, TRANSFERRED OR INCORPORATED IN ANY OTHER PROJECT IN ANY MANNER WITHOUT THE EXPRESS WRITTEN CONSENT OF SAMTEC, INC.

MATERIAL: DO NOT SCALE DRAWING SHEET SCALE: 6:1

SEE TABLE 1

520 PARK EAST BLVD, NEW ALBANY, IN 47150
PHONE: 812-944-6733 FAX: 812-948-5047
e-Mail: info@SAMTEC.com code: 55322

TABLE 1: MATERIAL			
SAMTEC PART NUMBER	ITEM	MATERIAL	PLATING - (REFERENCE)
MMCX-J-P-X-ST-MT1-SHL	SHELL	BRASS C3604B	0.00008[.000003] GOLD OVER .00127[.000050] NICKEL
MMCX-INS-008	INSULATOR	PTFE TEFLON (WHITE)	N/A
MMCX-J-P-X-ST-MT1-SKT	SOCKET	BeCu C17300	0.00076[.000030] GOLD OVER .00127[.000050] NICKEL

DESCRIPTION:
MMCX STRAIGHT, MIXED TECHNOLOGY JACK- 50 OHM

DWG. NO.
MMCX-J-P-X-ST-MT1

BY: R MUSSER 11/30/2007 SHEET 1 OF 1