

SPICE-Equivalent circuit model library

Table 1. Equivalent circuit data

Part Number	L (μ H)	F _{res} (MHz)	C1 (pF)	R1 (Ω)	R2 Nominal DCR of winding (Ω)
DR1040-1R5-R	1.4	103.0	1.71	1748.74	0.007
DR1040-2R5-R	2.4	75.3	1.86	2825.27	0.007
DR1040-3R8-R	3.6	59.5	1.99	4053.04	0.011
DR1040-5R2-R	5.2	48.1	2.11	5622.31	0.014
DR1040-7R0-R	6.8	41.2	2.20	7138.47	0.017
DR1040-8R2-R	8.1	37.2	2.26	8341.11	0.024
DR1040-100-R	9.6	33.7	2.32	9702.72	0.029
DR1040-150-R	15	26.0	2.49	14434.22	0.042
DR1040-220-R	21.1	21.3	2.63	19556.15	0.061
DR1040-330-R	33	16.5	2.83	29117.19	0.077
DR1040-470-R	45.8	13.6	2.98	38980.04	0.107
DR1040-680-R	65.3	11.1	3.16	53449.64	0.152
DR1040-820-R	86.8	9.4	3.30	68858.03	0.217
DR1040-101-R	100	8.7	3.38	78103.77	0.253
DR1040-151-R	150	6.8	3.61	112045.20	0.358
DR1040-221-R	216	5.5	3.82	155001.48	0.533
DR1040-331-R	330	4.3	4.09	226021.33	0.908

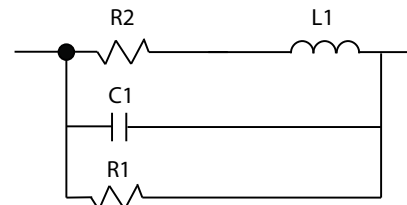


Figure 1. Equivalent circuit

Disclaimer

The data provided is for reference and is intended for evaluation purposes only. Users should verify all intended results in the end application.

Eaton
Electronics Division
 1000 Eaton Boulevard
 Cleveland, OH 44122
 United States
www.eaton.com/electronics

© 2018 Eaton
 All Rights Reserved
 Printed in USA
 Publication No. DR1040 Spice
 April 2018